



Aetna Better Health[®] of Kentucky

NETWORK NOTICE

Date:	June 13, 2024
To:	All Network Providers
From:	Provider Experience
Subject:	Aetna Enhanced Groupers
Document ID	Aetna-1878

ABHKY is assigning or reassigning individual service codes within the contract service groups, for those providers with contracts following the Aetna enhanced grouper listing. Changes to your compensation depends on the presence of specific service groupings in your contract. These updates will be a included in our second quarter updates,

Codes:	Provider types affected	What's changing
92920, 92924, 92986, 92987, 92990, 92997, 0238T, 0338T, 0339T, C9783	Facilities, including acute short-term hospitals and ambulatory surgery centers	Will be assigned to Ambulatory Surgery — Aetna Enhanced Grouper: Category 7 (AEG7) Code will remain assigned to Ambulatory Surgery: Default Rate. <ul style="list-style-type: none">• If the contract contains an Ambulatory Surgery — Aetna Enhanced Grouper: Category 7 rate, it will be applied. If not, then the Ambulatory Surgery: Default Rate will be applied.
92920, 92924, 92986, 92987, 92990, 92997, 0238T, 0338T, 0339T, C9783	Facilities, including acute short-term hospitals and ambulatory surgery centers	Will be assigned to Coventry Enhanced Grouper: Category 7 <ul style="list-style-type: none">• If contract contains

		<p>an Ambulatory Surgery— Coventry Enhanced Grouper: Category 7 rate, it will be applied; if not, then the Undefined Procedure Rate will be applied.</p> <ul style="list-style-type: none"> • If the contract contains none of the above provisions, the relevant terms of the contract will rule.
0644T	Facilities, including acute short-term hospitals and ambulatory surgery centers	<p>Will be assigned to Ambulatory Surgery — Aetna Enhanced Grouper: Category 7 (AEG7) and Cardiac Catheterization – AEG 7 procedures</p> <p>Code will be removed from Cardiac Catheterization – Default Surgery Procedures</p> <p>Code will remain assigned to Cardiac Catheterization and Ambulatory Surgery: Default Rate.</p> <ul style="list-style-type: none"> • If the contract contains a Cardiac Catheterization rate, it will be applied. If the contract does not contain a Cardiac Catheterization rate but contains an Ambulatory Surgery — Aetna Enhanced Grouper: Category 7 rate, it will be applied. If not, then the Ambulatory Surgery: Default Rate will be applied.
0644T	Facilities, including acute short-term hospitals and ambulatory surgery centers	<p>Will be assigned to Coventry Enhanced Grouper: Category 7</p> <ul style="list-style-type: none"> • If contract contains an Ambulatory Surgery— Coventry Enhanced Grouper: Category 7 rate, it will be applied; if not, then the Undefined Procedure Rate will be applied.

		<ul style="list-style-type: none"> • If the contract contains none of the above provisions, the relevant terms of the contract will rule.
C9600	Facilities, including acute short-term hospitals and ambulatory surgery centers	<p>Will be assigned to Ambulatory Surgery — Aetna Enhanced Grouper: Category 7 (AEG7)</p> <p>Code will remain assigned to Percutaneous Transluminal Coronary Angioplasty and Ambulatory Surgery: Default Rate.</p> <ul style="list-style-type: none"> • If the contract contains a Percutaneous Transluminal Coronary Angioplasty rate, it will be applied. If the contract does not contain a Percutaneous Transluminal Coronary Angioplasty rate but contains an Ambulatory Surgery — Aetna Enhanced Grouper: Category 7 rate, it will be applied. If not, then the Ambulatory Surgery: Default Rate will be applied.
C9600	Facilities, including acute short-term hospitals and ambulatory surgery centers	<p>Will be assigned to Coventry Enhanced Grouper: Category 7</p> <ul style="list-style-type: none"> • If contract contains an Ambulatory Surgery— Coventry Enhanced Grouper: Category 7 rate, it will be applied; if not, then the Undefined Procedure Rate will be applied. • If the contract contains none of the above provisions, the relevant terms of the contract will rule.
92928, 92933, 92937, 92943, 0645T	Facilities, including acute short-term hospitals and ambulatory surgery centers	<p>Will be assigned to Ambulatory Surgery — Aetna Enhanced Grouper: Category 8 (AEG8)</p>

		<p>Code will remain assigned to Ambulatory Surgery: Default Rate.</p> <ul style="list-style-type: none"> • If the contract contains an Ambulatory Surgery — Aetna Enhanced Grouper: Category 8 rate, it will be applied. If not, then the Ambulatory Surgery: Default Rate will be applied.
92928, 92933, 92937, 92943, 0645T	Facilities, including acute short-term hospitals and ambulatory surgery centers	<p>Will be assigned to Coventry Enhanced Grouper: Category 8</p> <ul style="list-style-type: none"> • If contract contains an Ambulatory Surgery— Coventry Enhanced Grouper: Category 8 rate, it will be applied; if not, then the Undefined Procedure Rate will be applied. • If the contract contains none of the above provisions, the relevant terms of the contract will rule.
C9602, C9604, C9607	Facilities, including acute short-term hospitals and ambulatory surgery centers	<p>Will be assigned to Ambulatory Surgery — Aetna Enhanced Grouper: Category 8 (AEG8)</p> <p>Code will remain assigned to Percutaneous Transluminal Coronary Angioplasty and Ambulatory Surgery: Default Rate.</p> <ul style="list-style-type: none"> • If the contract contains a Percutaneous Transluminal Coronary Angioplasty rate, it will be applied. If the contract does not contain a Percutaneous Transluminal Coronary Angioplasty rate but contains an Ambulatory Surgery — Aetna Enhanced Grouper: Category 8 rate, it will be applied. If not, then the

		Ambulatory Surgery: Default Rate will be applied.
C9602, C9604, C9607	Facilities, including acute short-term hospitals and ambulatory surgery centers	<p>Will be assigned to Coventry Enhanced Grouper: Category 8</p> <ul style="list-style-type: none"> • If contract contains an Ambulatory Surgery— Coventry Enhanced Grouper: Category 8 rate, it will be applied; if not, then the Undefined Procedure Rate will be applied. • If the contract contains none of the above provisions, the relevant terms of the contract will rule.
92921, 92925, 92929, 92934, 92938, 92944, C9601	Facilities including acute short-term hospitals and ambulatory surgery centers	<p>Will be assigned to Ambulatory Surgery — Aetna Enhanced Grouper: Category 1 (AEG1)</p> <p>Code will remain assigned to Ambulatory Surgery: Default Rate.</p> <ul style="list-style-type: none"> • If the contract contains an Ambulatory Surgery — Aetna Enhanced Grouper: Category 1 rate, it will be applied. If not, then the Ambulatory Surgery: Default Rate will be applied.



As always, do not hesitate to contact your Network Manager with any questions or comments.

NETWORK RELATIONS COVERAGE AND CONTACT INFORMATION

Aetna Better Health of Kentucky takes great pride in our network of physicians and related professionals who serve our members with the highest level of quality care and service. We are committed to making sure our providers receive the best and latest information, technology, and tools available to ensure their success and their ability to provide for our members. We focus on operational excellence, constantly striving to eliminate redundancy and streamline processes for the benefit and value of all our partners.

Our Network Relations Team is assigned to designated areas throughout the state and are located within the communities in which they serve. This team is dedicated to meeting the needs of you, our providers. We are subject matter experts and are available to providers for education, training, and support. We assign every participating provider a Network Manager.

Aetna Better Health of Kentucky offers a provider services line which can be reached by calling 1-855-300-5528 - Monday through Friday 7 AM-7 PM.

Credentialing applications, forms, and updates along with any demographic updates and terminations should be sent directly to: KyProviderUpdates@aetna.com

General forms, ERA enrollments, or general questions can be sent to KYProviderRelations@aetna.com



Gina Gullo
Sr. Network Manager
502-612-9958
Rgullo@Aetna.com

*All provider types
(excluding Behavioral Health)

Region 1

Ballard, Caldwell, Calloway, Carlisle, Crittenden, Fulton, Graves, Hickman, Livingston, Lyon, Marshall, McCracken

Region 2

Christian, Daviess, Hancock, Henderson, Hopkins, McLean, Muhlenberg, Ohio, Todd, Trigg, Union, Webster



Becky Bowman
Network Manager
502-322-2699
BowmanB@Aetna.com

*Ancillary Providers **ONLY** (Excluding BH, Hospital and PCP)

Region 3

Breckinridge, Bullitt, Carroll, Grayson, Hardin, Henry, Jefferson, Larue, Marion, Meade, Nelson, Oldham, Shelby, Spencer, Trimble, Washington

Region 5

Anderson, Bourbon, Boyle, Clark, Estill, Fayette, Franklin, Garrard, Harrison, Jackson, Jessamine,



Trista Gibson
Sr. Network Manager
606-305-2705
GibsonT1@Aetna.com

*Hospital Systems & PCP **ONLY**

Region 3

Breckinridge, Bullitt, Carroll, Grayson, Hardin, Henry, Jefferson, Larue, Marion, Meade, Nelson, Oldham, Shelby, Spencer, Trimble, Washington

Region 5

Anderson, Bourbon, Boyle, Clark, Estill, Fayette, Franklin, Garrard, Harrison, Jackson, Jessamine, Lincoln, Madison, Mercer, Montgomery, Nicholas, Owen,

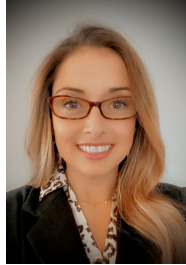
ALL Providers in the state of Indiana (excluding Behavioral Health)

Lincoln, Madison, Mercer, Montgomery, Nicholas, Owen, Powell, Rockcastle, Scott, Woodford

Powell, Rockcastle, Scott, Woodford

Including:

- University of Louisville
- Norton
- Ephraim McDowell
- University of Kentucky
- Community Health Partner
- Association of Primary Care Physicians
- The Physician Network
- CHI



Andrea Dewitt

Network Manager
270-306-0765
DewittA@aetna.com

*All provider types
(excluding Behavioral Health)

Region 4

Adair, Allen, Barren, Butler, Casey, Clinton, Cumberland, Edmonson, Green, Hart, Logan, McCreary, Metcalfe, Monroe, Pulaski, Russell, Simpson, Taylor, Warren, Wayne

ALL Providers in the state of Tennessee (excluding Behavioral Health)



Jennifer Hardin

Network Manager
606-240-0120
HardinJ@Aetna.com

*Ancillary Providers **ONLY**
(Excluding BH, Hospital and PCP)

Region 6 – Boone, Campbell, Gallatin, Grant, Kenton, Pendleton

Region 7 - Bath, Boyd, Bracken, Carter, Elliott, Fleming, Greenup, Lawrence, Lewis, Mason, Menifee, Morgan, Robertson, Rowan

Region 8 - Bell, Breathitt, Clay, Floyd, Harlan, Johnson, Knott, Knox, Laurel, Lee, Leslie, Letcher, Magoffin, Martin, Owsley, Perry, Pike, Whitley, Wolfe

Ancillary Providers in the states of **Ohio, Virginia and West Virginia**



Jacquelyne Pack

Sr. Network Manager
606-331-1075
Jmpack@Aetna.com

*Hospital Systems & PCP **ONLY**

Region 6 – Boone, Campbell, Gallatin, Grant, Kenton, Pendleton

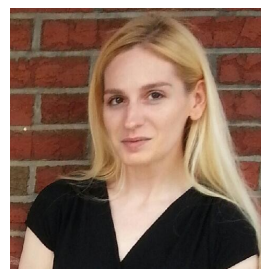
Region 7 - Bath, Boyd, Bracken, Carter, Elliott, Fleming, Greenup, Lawrence, Lewis, Mason, Menifee, Morgan, Robertson, Rowan

Region 8 - Bell, Breathitt, Clay, Floyd, Harlan, Johnson, Knott, Knox, Laurel, Lee, Leslie, Letcher, Magoffin, Martin, Owsley, Perry, Pike, Whitley, Wolfe

Hospital System and PCP Providers in the states of **Ohio, Virginia and West Virginia**

Including:

- Kentucky Primary Care Association
- St Elizabeth
- Baptist Healthcare
- St. Claire Medical



Holly Smith

Network Manager
Behavioral Health
815-641-7411

Smithh3@Aetna.com

Community Mental Health Centers -
statewide

Behavioral Health Providers

Region 1
Region 2
Region 7
Region 8



Michelle Marrs

Network Manager
859-221-4737

Marrsm@Aetna.com

SKY, Supporting Kentucky's Youth -
statewide

All other Out of State Providers not
otherwise listed



Krystal Risner

Supervisor, Network Relations
606-687-0310

Risnerk@Aetna.com

Christi Atkinson

Network Manager
Behavioral Health
859-321-0775

AtkinsonC1@Aetna.com

Behavioral Health Providers

Region 3
Region 4
Region 5
Region 6



Dustin Johnson

Provider Experience Manager
502-648-6526

JohnsonD38@Aetna.com

Statewide



Joann Marston

Ld. Director, Network Management
859-669-6217

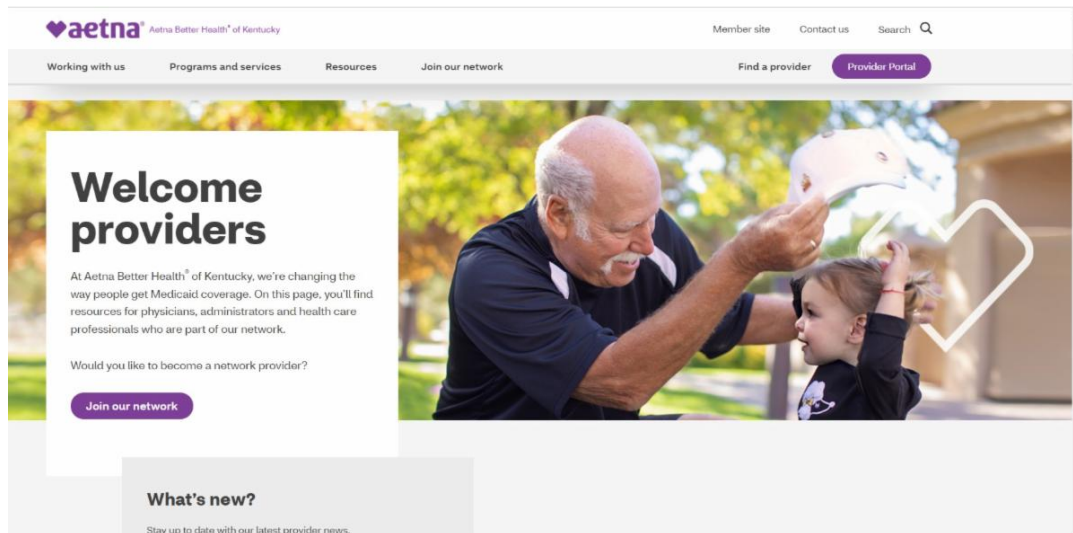
MarstonJ@Aetna.com

Save time by accessing our online resources.
Be sure to check out our convenient web tools, available 24/7.

Health Plan Website

The health plan website is a resource for members and providers. Providers will find information such as the member handbook, provider manual and the formulary on

Visit the Website at: AetnaBetterHealth.com/Kentucky



Availity

Aetna Better Health of Kentucky is excited to have transitioned from our Provider Portal to Availity. This transition allows for an increase in digital interactions available to support you as you provide services for our members.

Functionality examples include:

- Eligibility and member benefits look up -
- Claim status look up -
- Online claim submission
- PA submission and look up
- Grievance and appeals submission

Visit Availity at: AVAILITY



Visit us at [Aetna Better Health of Kentucky](https://AetnaBetterHealth.com/Kentucky) | [Contact Us](#) | [FAQs](#) | [Privacy Policy](#)

Aetna Better Health of Kentucky | 9900 Corporate Campus Drive Suite 1000 | Louisville , KY 40223 US

[Unsubscribe](#) | [Update Profile](#) | [Constant Contact Data Notice](#)



Try email marketing for free today!